

Associated Students, Inc.
California State University, Los Angeles

Grant in Aid Increase Proposal

Prepared by:

Jazmin Ortiz
Secretary/Treasurer

Biweekly and Workflow Ad Hoc Committee

April 20, 2018

Executive Summary

Since 2002 the cost of living has grown exponentially. We have experienced inflation for the past sixteen years due to an increase in the consumer price index in the state's economy. For this research, data was collected from 16 of the 22 California State University Campuses to compare changes in student population, ASI budget size, and cost of living in the surrounding area of each campus and concluded that Cal State LA's ASI student members are under paid. According to our analysis, ASI student members have been under funded for the past sixteen years and have been financially impacted as the cost of living and college tuition have increased. Being a college student representative is a full-time job, balancing between hosting events, advocating, going to classes, and weekly meetings. The prime purpose of being a student representative is to support and enhance college students' experiences by providing student engagement, campus events, leadership programs, student employment, and student support services at Cal State LA. Although, being a student representative is an extracurricular activity, the workload associated to being part of Associated Students Incorporated forces students to make ASI their full time job.

Methods of Research and Analysis

Grants-in-Aid: Our Executive Director, Intef W. Weser, reached out via email to other Executive Directors of the 22 California State Universities with student governments in order to gather Grants-in-Aid data. The email requested information about the size of each campuses student body, student government budget, and stipend amount. Only 16 responses were received. As a result, we used the 16 out of 22 campuses to compare Cal State Los Angeles's Grant-in-Aid amounts. [See Appendix 1]. This offered enough data to have an illustration of all Associated Students.

In addition, based on the data, campuses whose budget and student population equivalent to ours were selected for comparison. We used Cal State LA Grant-in-Aid information as the foundation for assessment to find the ratio of 5 of her 22 sister campus to determine either if their representatives were under or overpaid [See Appendix 2]. In circumstances where a campus had more than one position for each position, stipends for those positions we're averaged with members of their respective class.

Cost of Living/Inflation: To gather data on inflation, we visited the website for the Bureau of Labor Statistics and obtained the CPI (Consumer Price Index) calculator, a reading economic indicator of inflation, data from 2002 to 2018. The CPI for 2002 was compared to the CPI for 2018 in order to determine the percentage that the cost of living has cumulative over the years for students at Cal State LA [See Appendix 3a, 3b, 3c, 3e and 3f]. Based on the analysis of previous ASI administrations historical minutes and records, we determined that ASI Grants-in-Aid has remained the same amount since 2002.

Budget Analysis. Comparing the five sister campuses helped us conduct a comprehensive research to associate the budget sizes of each campus along with their stipend disbursements. We gathered the information by examining their respective websites and emailing the Executive

Directors from the five sister campuses. With this, we determine the ratio used for stipends in each campus budget [See Appendix 4a and 4b].

Findings: Although Cal State LA allocates 8.0% of its budget for stipends while on average the other five campuses allocate 1% of their budget, the research, shows that our ASI representatives are underpaid by an average of 37%.

Since 2002, the last year from which ASI previously raised Grants-in-Aid, data taken from the Bureau of Labor Statistics demonstrated that there was a CPI increase from 2002-2018 by 40%. The value of dollar in 2002 is worth 40% less than a dollar today.

Recommendation

Among our findings, in order to address the above problem, we propose to have a GIA increase of **\$49,220.53** for the upcoming ASI members in order to ensure a sense of financial security as the stipend will provide support to pay for expenses associated with college for the student leaders in the organization. This was determined by increasing the GIA by 37% (2017 CPI). As a result, the researchers are recommending one of the following option:

Scenario 1: Fully fund \$49,220.53 for the upcoming for the 2018-2019 ASI members.

Scenario 2: Partially fund the GIA increase within two years. This will result in having \$24,610.26 GIA increase for the two upcoming fiscal years.

Scenario 3: Fund one third increase for the next three years. This will result in having an increase of \$16,404.84 for the next three fiscal years.

Based on the final recommendation scenario there will also be a stipulation to allocate any funds for the GIA increase if funding is available.

Appendix 1

Campus	Student Population	Budget	President	VP/Executive Officers	Board of Directors/Reps	Senators	Chief/Vice Chair	Comm	Associate Justices	Number of Students	Compensation	Type of compensation	How often are funds distributed?
1 Cal State LA	28,253	\$1,620,596	\$8,905.60	\$6,388.80	\$3,484.80	\$3,484.80	\$3,484.80	\$2,230.24	\$1,548.80		Priority registration for elected positions; Faculty parking for Executive Officers	Grand-In-Aid payments to eligible student directors on the basis of position and service. GIA payments are made in the form of stipend checks, are non-taxable, and count against financial aid.	Semester system and the officers receive payments two times in the summer and three times a semester fall and semester (5th and 10th and 15th weeks) for a total of 8 payments per year.
2 Cal Poly Pomona	25,894	\$15 million								14	\$54,584	Scholarship	quarterly, but again, your survey required I answer "other"
3 CSU Bakersfield	9,863	\$458,667	\$7,000	\$7,000	NA	NA	NA	NA	NA	4 execs/27 board members	All Board members receive priority registration and a parking pass each semester.	Scholarship	Semester
4 CSU Channel Islands	7,053	\$978,300	\$0	\$0	\$0	\$0	\$0	\$0	\$0	14	We do not compensate our Board of Directors.	No compensation	
5 Northridge	39,816	9.2M	\$23,369	\$19,142	\$1,050		NA	NA	NA		Prez gets \$16,640; VP gets \$12,350 Both get parking and all fees paid; Senators/Directors get \$75 fourteen times per year. If they chair one of three standing committees, they get another \$75 fourteen times a year	Stipend	Biweekly
6 CSU, Chico	17,789	\$20.8 million	60% of cost of attending	52.5% of cost of attending	40% of cost of attending	15% of cost of attending	NA	25% of cost of attending	NA	Nine Voting (6 students/3 non-students)	\$96,364	Scholarship	Semester
7 CSUSM	13,893	\$2 million	20 hrs	20 hrs	NA	NA	NA	NA	NA	17	4 Execs are hourly employees not to exceed 20 hrs per week, 13 members receive a parking pass	Employee	Biweekly
8 Dominguez Hills	15,179	1.9 mil	\$12,600	7,000	\$1,500	NA	NA	\$1,500	NA	16	Priority Registration, Parking pass for President	Fellowship with 1-3 unit class instructed by Dean of Students	Monthly for Exec Board, but quarterly for all other members
9 Fresno	25,168	700,000								19 senators / 4 execs	Only executives	Stipend	Monthly
10 Humboldt	8,347	for 2017-18 stipends = \$40,831								18 total	Stipends are based on a specific % of annual student fees ranging from 25% to 95% depending on the position. No additional perks are provided at this time.	Stipend	2x / semester
11 Sac State	30,661	9,000,000	70% of cost of attending	60% of cost of attending	35% of cost of attending	NA	NA	NA	NA	14	Priority registration, allowed to upgrade student parking with Faculty/Staff access.	Scholarship	Semester
12 San Bernardino	20,461	\$7k	\$ 16,100	\$ 16,100	NA	NA	NA	NA	NA	3 Execs/13 Board members	Hourly compensation for Execs. Board members receive access to Parking passes, food vouchers or book vouchers		Quarterly
13 San Jose State University	33,409	8.1 million	\$ 12,100	\$ 12,100	\$ 6,600	NA	NA	NA	NA	16 Board members	3 Executives are paid \$1100/month and 13 Director are paid \$600/month	stipend	Monthly
14 SDSU	34,828	\$29 million			NA	NA	NA	NA	NA	11 (and two councils with 30 some each)	Only 5 executive officers are paid	Employee	Biweekly
15 Sonoma	9,223	\$2.4 million	\$ 875.00	\$ 835.00						14	For 2018/19: President - \$875, VP's (2) - \$835, Senators (11) \$510 for 9 months	Statutory non-employee award check - similar to a stipend, but taxed like income	Monthly
16 Stanislaus State	10,003	1.2 Million	\$18,000	\$13,000	NA	NA	NA	NA	NA	16 Board of Directors	Executives are hourly employees Budget - President \$18,000, Vice President \$13,000, Secretary \$7,500 (No other BOD member is compensated)	Employee	Biweekly

Appendix 2**ORIGINAL DATE VALUE****CPI-All Urban Consumers (Current Series)****12-Month Percent Change**

Series Id: CUUR0000SA0

Not Seasonally Adjusted

Series Title: All items in U.S. city average, all urban consumers, not

Area: U.S. city average

Item: All items

Base Period: 1982-84=100

Years: 2002 to 2018

Year	Jan	Feb	Mar	Apr	May	Jun	Jul	Aug	Sep	Oct	Nov	Dec	Annual
2002	1.1	1.1	1.5	1.6	1.2	1.1	1.5	1.8	1.5	2.0	2.2	2.4	1.6
2003	2.6	3.0	3.0	2.2	2.1	2.1	2.1	2.2	2.3	2.0	1.8	1.9	2.3
2004	1.9	1.7	1.7	2.3	3.1	3.3	3.0	2.7	2.5	3.2	3.5	3.3	2.7
2005	3.0	3.0	3.1	3.5	2.8	2.5	3.2	3.6	4.7	4.3	3.5	3.4	3.4
2006	4.0	3.6	3.4	3.5	4.2	4.3	4.1	3.8	2.1	1.3	2.0	2.5	3.2
2007	2.1	2.4	2.8	2.6	2.7	2.7	2.4	2.0	2.8	3.5	4.3	4.1	2.8
2008	4.3	4.0	4.0	3.9	4.2	5.0	5.6	5.4	4.9	3.7	1.1	0.1	3.8
2009	0.0	0.2	-0.4	-0.7	-1.3	-1.4	-2.1	-1.5	-1.3	-0.2	1.8	2.7	-0.4
2010	2.6	2.1	2.3	2.2	2.0	1.1	1.2	1.1	1.1	1.2	1.1	1.5	1.6
2011	1.6	2.1	2.7	3.2	3.6	3.6	3.6	3.8	3.9	3.5	3.4	3.0	3.2
2012	2.9	2.9	2.7	2.3	1.7	1.7	1.4	1.7	2.0	2.2	1.8	1.7	2.1
2013	1.6	2.0	1.5	1.1	1.4	1.8	2.0	1.5	1.2	1.0	1.2	1.5	1.5
2014	1.6	1.1	1.5	2.0	2.1	2.1	2.0	1.7	1.7	1.7	1.3	0.8	1.6
2015	-0.1	0.0	-0.1	-0.2	0.0	0.1	0.2	0.2	0.0	0.2	0.5	0.7	0.1
2016	1.4	1.0	0.9	1.1	1.0	1.0	0.8	1.1	1.5	1.6	1.7	2.1	1.3
2017	2.5	2.7	2.4	2.2	1.9	1.6	1.7	1.9	2.2	2.0	2.2	2.1	2.1
2018	2.1	2.2											

APPENDIX 3B-

CPI-All Urban Consumers (Current Series)

12-Month Percent Change

Series Id: CUUR0000SA0

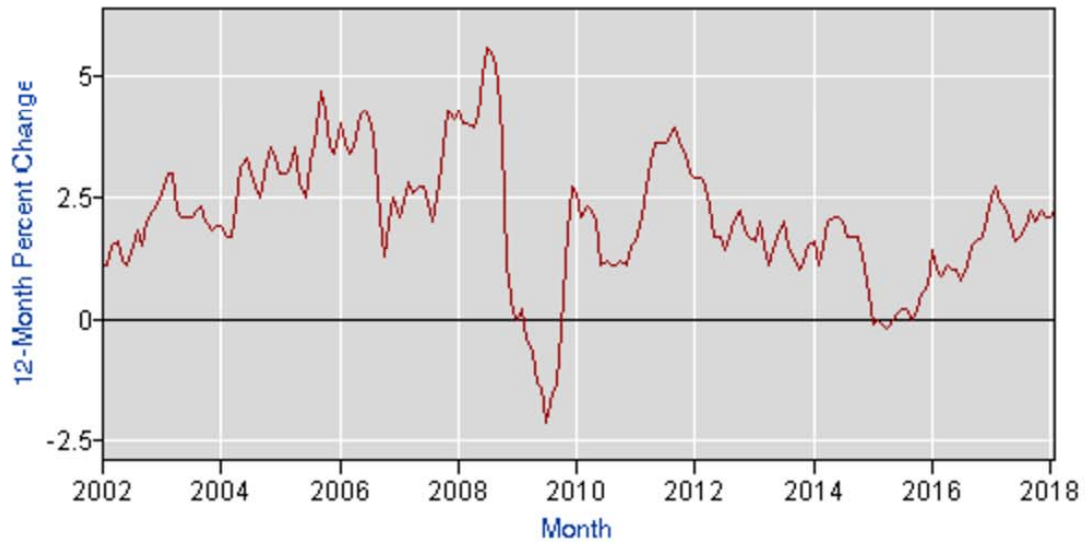
Not Seasonally Adjusted

Series Title: All items in U.S. city average, all urban consumers, not seasonally adjusted

Area: U.S. city average

Item: All items

Base Period: 1982-84=100



Source: <https://data.bls.gov/pdq/SurveyOutputServlet>

APPENDIX 3C-

CPI Inflation Calculator

\$

in

has the same buying power as

in

CPI Inflation Calculator

\$

in

has the same buying power as

in

SOURCE: https://www.bls.gov/data/inflation_calculator.htm

Appendix 3E

Associated Students, Inc.
 CALIFORNIA STATE UNIVERSITY, LOS ANGELES
 2018-19 Current Proposed Operating Budget Review

Associated Students, Inc.
 Student Government
 GRANT-IN-AID

609951	00001	783000
There are eight GIA payments per year on the 5th, 10th, & 15th Week of each semester.		

Summer, Fall, Winter, Spring	NEW Annual	Payment for Each GIA Per 1st Period	Payment for Each GIA Per 7 Periods
President	\$ 8,905.60	\$ 1,113.20	\$ 1,113.20
Vice-President for Administration	\$ 6,388.80	\$ 798.60	\$ 798.60
Vice-President for Academic Governance	\$ 6,388.80	\$ 798.60	\$ 798.60
Vice President for Finance ##	\$ 6,388.80	\$ 798.60	\$ 798.60
Vice President for External Affairs and Advancement	\$ 6,388.80	\$ 798.60	\$ 798.60
Secretary/Treasurer	\$ 6,388.80	\$ 798.60	\$ 798.60
Chief Justice	\$ 3,484.80	\$ 435.60	\$ 435.60
Representative-At-Large Community Affairs	\$ 3,484.80	\$ 435.60	\$ 435.60
Representative-At-Large Campus Affairs	\$ 3,484.80	\$ 435.60	\$ 435.60
(1) College of Arts & Letters Rep.	\$ 3,484.80	\$ 435.60	\$ 435.60
(2) College of Arts & Letters Rep.	\$ 3,484.80	\$ 435.60	\$ 435.60
(1) College of Business & Economics Rep.	\$ 3,484.80	\$ 435.60	\$ 435.60
(2) College of Business & Economics Rep.	\$ 3,484.80	\$ 435.60	\$ 435.60
(1) Charter College of Education Rep.	\$ 3,484.80	\$ 435.60	\$ 435.60
(2) Charter College of Education Rep.	\$ 3,484.80	\$ 435.60	\$ 435.60
(1) College of Engineering, Computer Science, & Technology Rep.	\$ 3,484.80	\$ 435.60	\$ 435.60
(2) College of Engineering, Computer Science, & Technology Rep.	\$ 3,484.80	\$ 435.60	\$ 435.60
(1) College of Health & Human Services Rep.	\$ 3,484.80	\$ 435.60	\$ 435.60
(2) College of Health & Human Services Rep.	\$ 3,484.80	\$ 435.60	\$ 435.60
(1) College of Natural & Social Sciences Rep.	\$ 3,484.80	\$ 435.60	\$ 435.60
(2) College of Natural & Social Sciences Rep.	\$ 3,484.80	\$ 435.60	\$ 435.60
Academic Senator	\$ 3,484.80	\$ 435.60	\$ 435.60
Academic Senator	\$ 3,484.80	\$ 435.60	\$ 435.60
Academic Senator	\$ 3,484.80	\$ 435.60	\$ 435.60
Academic Senator At-Large	\$ 3,484.80	\$ 435.60	\$ 435.60
Graduate Academic Senator	\$ 3,484.80	\$ 435.60	\$ 435.60
Graduate Academic Senator	\$ 3,484.80	\$ 435.60	\$ 435.60
Vice Chair for Finance	\$ 3,484.80	\$ -	\$ 497.83
Public Relations & Marketing Commissioner	\$ 2,230.24	\$ -	\$ 318.61
Elections/Marketing Team Member	\$ 600.00	\$ -	\$ 85.71
Elections/Marketing Team Member	\$ 600.00	\$ -	\$ 85.71
Elections/Marketing Team Member	\$ 600.00	\$ -	\$ 85.71
Environmental Affairs Commissioner	\$ 2,230.24	\$ -	\$ 318.61
Spirit Commissioner	\$ 2,230.24	\$ -	\$ 318.61
Housing Representative	\$ 1,800.00	\$ -	\$ 257.14
Elections & Orientation Commissioner	\$ 2,230.24	\$ -	\$ 318.61
Veteran Affairs Representative	\$ 1,800.00	\$ -	\$ 257.14
Associate Justice	\$ 1,548.80	\$ -	\$ 221.26
Associate Justice	\$ 1,548.80	\$ -	\$ 221.26
Associate Justice	\$ 1,548.80	\$ -	\$ 221.26
Grand Total	\$136,482.56	\$14,253.80	\$17,461.25

Appendix 3F

Associated Students, Inc.
 CALIFORNIA STATE UNIVERSITY, LOS ANGELES
 2018-19 New Proposed Operating Budget Review

Associated Students, Inc.
 Student Government
GRANT-IN-AID

609951 00001 783000
There are eight GIA payments per year on the 5th, 10th, & 15th Week of each semester.

Summer, Fall, Winter, Spring	NEW Annual	Payment for Each GIA Per 1st Period	Payment for Each GIA Per 7 Periods
President	\$ 12,200.64	\$ 1,525.08	\$ 1,525.08
Vice-President for Administration	\$ 8,752.64	\$ 1,094.08	\$ 1,094.08
Vice-President for Academic Governance	\$ 8,752.64	\$ 1,094.08	\$ 1,094.08
Vice President for Finance	\$ 8,752.64	\$ 1,094.08	\$ 1,094.08
Vice President for External Affairs and Advancement	\$ 8,752.64	\$ 1,094.08	\$ 1,094.08
Secretary/Treasurer	\$ 8,752.64	\$ 1,094.08	\$ 1,094.08
Chief Justice	\$ 4,774.16	\$ -	\$ 682.02
Representative-At-Large Community Affairs	\$ 4,774.16	\$ 596.77	\$ 596.77
Representative-At-Large Campus Affairs	\$ 4,774.16	\$ 596.77	\$ 596.77
(1) College of Arts & Letters Rep.	\$ 4,774.16	\$ 596.77	\$ 596.77
(2) College of Arts & Letters Rep.	\$ 4,774.16	\$ 596.77	\$ 596.77
(1) College of Business & Economics Rep.	\$ 4,774.16	\$ 596.77	\$ 596.77
(2) College of Business & Economics Rep.	\$ 4,774.16	\$ 596.77	\$ 596.77
(1) Charter College of Education Rep.	\$ 4,774.16	\$ 596.77	\$ 596.77
(2) Charter College of Education Rep.	\$ 4,774.16	\$ 596.77	\$ 596.77
(1) College of Engineering, Computer Science, & Technology Rep.	\$ 4,774.16	\$ 596.77	\$ 596.77
(2) College of Engineering, Computer Science, & Technology Rep.	\$ 4,774.16	\$ 596.77	\$ 596.77
(1) College of Health & Human Services Rep.	\$ 4,774.16	\$ 596.77	\$ 596.77
(2) College of Health & Human Services Rep.	\$ 4,774.16	\$ 596.77	\$ 596.77
(1) College of Natural & Social Sciences Rep.	\$ 4,774.16	\$ 596.77	\$ 596.77
(2) College of Natural & Social Sciences Rep.	\$ 4,774.16	\$ 596.77	\$ 596.77
Academic Senator	\$ 4,774.16	\$ 596.77	\$ 596.77
Academic Senator	\$ 4,774.16	\$ 596.77	\$ 596.77
Academic Senator	\$ 4,774.16	\$ 596.77	\$ 596.77
Academic Senator At-Large	\$ 4,774.16	\$ 596.77	\$ 596.77
Graduate Academic Senator	\$ 4,774.16	\$ 596.77	\$ 596.77
Graduate Academic Senator	\$ 4,774.16	\$ 596.77	\$ 596.77
Vice Chair for Finance	\$ 4,774.16	\$ -	\$ 682.02
Public Relations & Marketing Commissioner	\$ 3,055.50	\$ -	\$ 436.50
Elections/Marketing Team Member	\$ 840.00	\$ -	\$ 120.00
Elections/Marketing Team Member	\$ 840.00	\$ -	\$ 120.00
Elections/Marketing Team Member	\$ 840.00	\$ -	\$ 120.00
Environmental Affairs Commissioner	\$ 3,055.50	\$ -	\$ 436.50
Spirit Commissioner	\$ 3,055.50	\$ -	\$ 436.50
Housing Representative	\$ 1,800.00	\$ -	\$ 257.14
Elections & Orientation Commissioner	\$ 3,055.50	\$ -	\$ 436.50
Veteran Affairs Representative	\$ 1,800.00	\$ -	\$ 257.14
Associate Justice	\$ 2,121.91	\$ -	\$ 303.13
Associate Justice	\$ 2,121.91	\$ -	\$ 303.13
Associate Justice	\$ 2,121.91	\$ -	\$ 303.13
Grand Total	\$185,703.09	\$18,930.88	\$23,824.60

Appendix 4a

GIA Budget Allocation														
Campus	Student Population	Budget	President	VP/Executive Officers		Board of Directors/Reps	Senators	Chief/Vice Chair	Comm	Associate Justices	Number of Students	Compensation	Type of compensation	How often are funds distributed?
Cal State LA	28,253	\$1,620,596	\$8,905.60	\$6,388.80		\$3,484.80	\$3,484.80	\$3,484.80	\$2,230.24	\$1,548.80	40	Priority registration for elected positions; Faculty parking for Executive Officers	Grand-In-Aid payments to eligible student directors on the basis of position and service. GIA payments are made in the form of stipend checks, are non-taxable, and count against financial aid.	Semester system and the officers receive payments two times in the summer and three times a semester fall and semester (5th and 10th and 15th weeks) for a total of 8
Northridge	39,816	9.2M	\$23,369	\$19,142		\$1,050		NA	NA	NA	N/A	Prez gets \$16,640; VP gets \$12,350 Both get parking and all fees paid; Senators/Directors get \$75 fourteen times per year. If they chair one of three standing committees, they get another \$75 fourteen times a year	Stipend	Biweekly
CSU, Chico	17,789	\$20.8 million	60% of cost of attending	52.5% of cost of attending		40% of cost of attending	15% of cost of attending	NA	25% of cost of attending	NA	Nine Voting (6 students/3 non-students)	\$96,364	Scholarship	Semester
Dominguez Hills	15,179	1.9 mil	\$12,600	7,000		\$1,500	NA	NA	\$1,500	NA	16	Priority Registration, Parking pass for President	Fellowship with 1-3 unit class instructed by Dean of Students	Monthly for Exec Board, but quarterly for all other members
Sac State	30,661	9,000,000	70% of cost of attending	60% of cost of attending		35% of cost of attending	NA	NA	NA	NA	14	Priority registration, allowed to upgrade student parking with Faculty/Staff access.	Scholarship	Semester
San Jose State University	33,409	8.1 million	\$ 12,100	\$ 12,100		\$ 6,600	NA	NA	NA	NA	16 Board members	3 Executives are paid \$1100/month and 13 Director are paid \$600/month	stipend	Monthly

GIA Budget Analysis-Part I						
School	Budget	GIA	Percentage	Percentage	Compensation	# of Members
CAL STATE LA	1,620,596	\$ 136,482.56	0.08421751	8.00%	Stipend	40
DOMINGUEZ HILLS	1,900,000	\$ 22,600.00	0.011894737	1.10%	Fellowships	16
CSU CHICO	20,800,000	\$ 96,364.00	0.004632885	0.40%	Scholarships	9
CSUN	9,200,000	N/A	N/A	N/A	Stipend	24
SAC STATE	9,000,000	N/A	N/A	N/A	Scholarships	14
SAN JOSE UNIV	8,100,000	3 Execs are paid \$1100/month & 13 Director are paid \$600/month	N/A	N/A	Stipend	16

GIA Budget Analysis-Part II			
School	**Campus Size	Budget	Student Body Fees
CAL STATE LA	28,253	\$ 1,620,596	\$53.75
DOMINGUEZ HILLS	15,179	\$ 1,900,000	\$134
CSU CHICO	17,789	\$ 20,800,000	\$134
CSUN	39,816	\$ 9,200,000	\$188
SAC STATE	30,661	\$ 9,000,000	\$134
SAN JOSE UNIV	33,409	\$ 8,100,000	\$185

Appendix 4b

	Cal State LA	Northridge	% Difference
President	\$8,905.60	\$ 23,369.00	162%
VP/Executive Officers	\$6,388.80	\$ 19,142.00	200%
Board of Directors/Reps	\$3,484.80	\$ 1,050.00	-70%
Senators	\$3,484.80	\$ 1,050.00	-70%
Chief/Vice Chair	\$3,484.80	NA	NA
Comm	\$2,230.24	NA	NA
Associate Justices	\$1,548.80	NA	NA

	Cal State LA	DH	% Difference
President	\$8,905.60	\$ 12,699.00	43%
VP/Executive Officers	\$6,388.80	\$ 7,000.00	10%
Board of Directors/Reps	\$3,484.80	\$ 1,500.00	-57%
Senators	\$3,484.80	\$ 1,050.00	-70%
Chief/Vice Chair	\$3,484.80	NA	NA
Comm	\$2,230.24	\$ 1,500.00	-33%
Associate Justices	\$1,548.80	NA	NA

	Cal State LA	San Jose	% Difference
President	\$8,905.60	\$ 12,100.00	36%
VP/Executive Officers	\$6,388.80	\$ 12,100.00	89%
Board of Directors/Reps	\$3,484.80	\$ 6,600.00	89%
Senators	\$3,484.80	NA	NA
Chief/Vice Chair	\$3,484.80	NA	NA
Comm	\$2,230.24	NA	NA
Associate Justices	\$1,548.80	NA	NA

	Cal State LA	Sac State	% Difference
President	\$8,905.60	\$ 18,567.50	108%
VP/Executive Officers	\$6,388.80	\$ 15,915.00	149%
Board of Directors/Reps	\$3,484.80	\$ 9,283.75	166%
Senators	\$3,484.80	NA	NA
Chief/Vice Chair	\$3,484.80	NA	NA
Comm	\$2,230.24	NA	NA
Associate Justices	\$1,548.80	NA	NA

Sac State Cost of Attendance
\$ 26,525.00

	Cal State LA	Chico	% Difference
President	\$8,905.60	\$ 15,297.60	72%
VP/Executive Officers	\$6,388.80	\$ 13,385.40	110%
Board of Directors/Reps	\$3,484.80	\$ 10,198.40	193%
Senators	\$3,484.80	\$ 3,824.40	10%
Chief/Vice Chair	\$3,484.80	NA	NA
Comm	\$2,230.24	NA	NA
Associate Justices	\$1,548.80	NA	NA

Chico Cost of Attendance
\$ 25,496.00

Campus	President	VP/Executive Officers	Board of Directors/Reps	Senators	Chief/Vice Chair	Comm	Associate Justices
Northridge	162%	200%	-70%	-70%	NA	NA	NA
DH	43%	10%	-57%	-70%	NA	-33%	NA
San Jose	36%	89%	89%	NA	NA	NA	NA
Sac State	108%	149%	166%	NA	NA	NA	NA
Chico	72%	110%	193%	10%	NA	NA	NA
Average	84%	111%	64%	-43%	NA	-33%	NA

Average 37%
